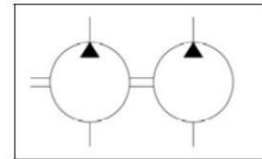




Catalogue of double gear hydroelectric generator

HP 80/32, HP 80/32 L
HP 80/40, HP 80/40 L



Technical conditions:

Pressure on outlet of hydroel. generator: - nominal 16 MPa
- maximum * 19 MPa

* stated maximum pressure is only pressure peak of hydraulic circuit and it is not possible to consider this peak like working pressure.

Maximum time allowed for this overpressure are 3 seconds.

Pressure on input: - maximum 0,05 MPa
- minimum - 0,03 MPa

Surroundings temperature -30 to +60°C

Liquid temperature -30 to +80°C

Liquid - mineral oil for hydrostatic drives f.e.:
MOGUL OLN 22 TO 46
Shell Tellus 32
Shell Tellus 46
Madit OHHM 46

Operating range of hydraulic oil kinematic viscosity during 40°C 20 - 60 mm² s⁻¹

Maximum kinematic viscosity (during start up) 1200 . mm² s⁻¹

Filtration efficiency of filter insert 10 - 25 μm
β₂₅ 75

Working position arbitrary

Technical specifications

Signification of gear hydroelectric generator	Nominal geometric capacity cm ³ / rot.	Rotations 1/min			Nominal pressure MPa	During nominal rotations and nominal pressure	
		Min. *	Max. *	Nominal		input kW	overflow dm ³ /min
HP 80/32	80/32	600	2200	1500	16	47,5	108/43,2
HP 80/40	80/40	600	2200	1500	16	51	108/54

* Permanent operation on nominal pressure 16 MPa is allowed only in rotations range from 600 to 1 800 min⁻¹. Out of this rotations range is allowed max. pressure 12 MPa.

MARTING s.r.o. (Ltd.), NÁBREŽNÁ 2, SK - 038 61 VRÚTKY, SLOVAKIA

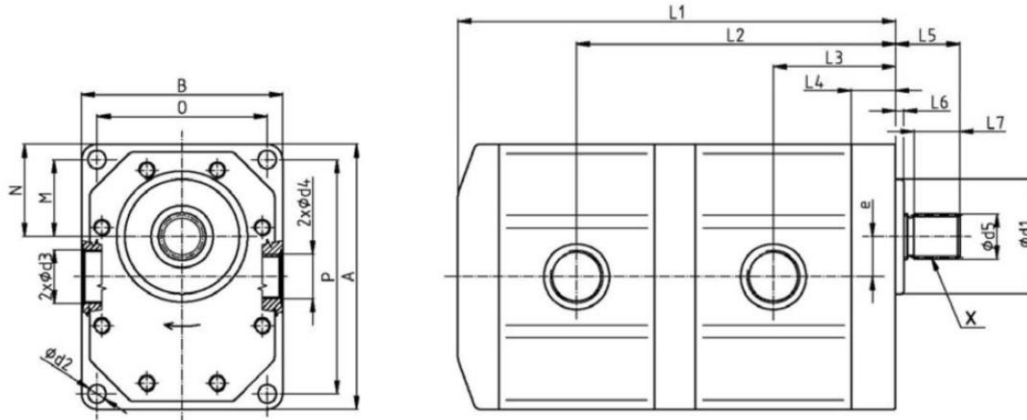
tel.: ++421 43 4281 707-9, fax: ++421 43 4281 706, www.marting.sk

E-mail: marting@marting.sk



Main built-up measurements - involute shaft, side connection

Pump types: HP 80/32, HP 80/32 L, HP 80/40, HP 80/40 L
(showed dextrorotary pump)



Pump: HP 80/32, HP 80/40, HP 80/32 L, HP 80/40 L

(measurements in mm)

Nominal geometric capacity	L1	L5	L4	L6	L7	e	B	A	M	N
80/32	297	53	31	5	38	32,5	170	220	62,5	77,5
80/40	303									

Nominal geometric capacity	L3	L2	O	P	d5	d1	d2
80/32	89	227	140	190	$\phi 37,3 \text{ h}10$ Involute splines 38 x 1,5 tolerance of counterpart - H9	95 f8	13
80/40	89	230					

MARTING s.r.o. (Ltd.), NÁBREŽNÁ 2, SK - 038 61 VRÚTKY, SLOVAKIA
 tel.: ++421 43 4281 707-9, fax: ++421 43 4281 706, www.marting.sk
 E-mail: marting@marting.sk



Main built-up measurements - involute shaft, side connection

Pumps suction and displacement:

HP 80/32
HP 80/40
HP 80/32 L
HP 80/40 L

	Thread	Depth of thread	Lightness Js
Suction d3	M 48 x 2	22	40 - required
Displacement d4	M 33 x 2	18	25 - recommended
Suction d6	M 33 x 2	18	32 - required
Displacement d7	M 27 x 2	16	20 - recommended

Pumps signification

HP	80/32	L
Hydrogenerator	Nominal geometric capacity	Counter-clockwise (without signification = dextrorotary)

MARTING s.r.o. (Ltd.), NÁBREŽNÁ 2, SK - 038 61 VRÚTKY, SLOVAKIA
tel.: ++421 43 4281 707-9, fax: ++421 43 4281 706, www.marting.sk
E-mail: marting@marting.sk